

Separate catalog available

### YD2-1025S/D, YD2-2535S/D

Productivity enhancement, downtime reduction, and environment-conscious models support easy introduction in low-clearance installations



For CE supported languages, please contact our sales department.

Clamping force 100 - 350 tf

Vibration control

Optimized design + Power-saving

Low posture (Double speed mechanism)

All-axis servo-driven

### All-Axis Servo Driven Take-out Robot Enhancing Customer Profitability and Environmental Measures

Combining design optimization, CFRPV3, and vibration control contribute to shorter cycle time and stable take-out. We have refined our unique ECO Vacuum™ technology to reduce compressed air consumption even further. As a result, robot air consumption can be economized and can reduce capital expenditures. The YD2-1025/2535 is sized for molding machines with clamping forces from 100 to 350 tf.

### Equipped with E-touch compact 3 as standard



- Smart ECO Vacuum
- Take-out Diagnosis Function
- Torque Monitoring during Manual Operation

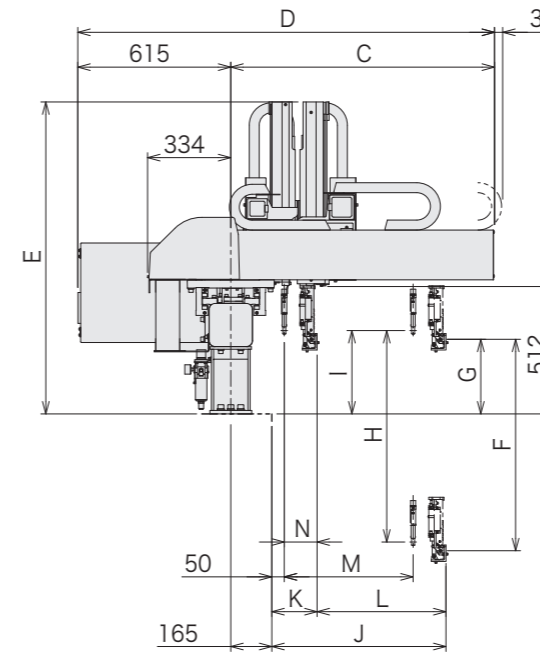
The E-touch compact 3 takes the easy operability of the previous YC series controller. And several assist features to become even easier to use.

#### Standard Specifications

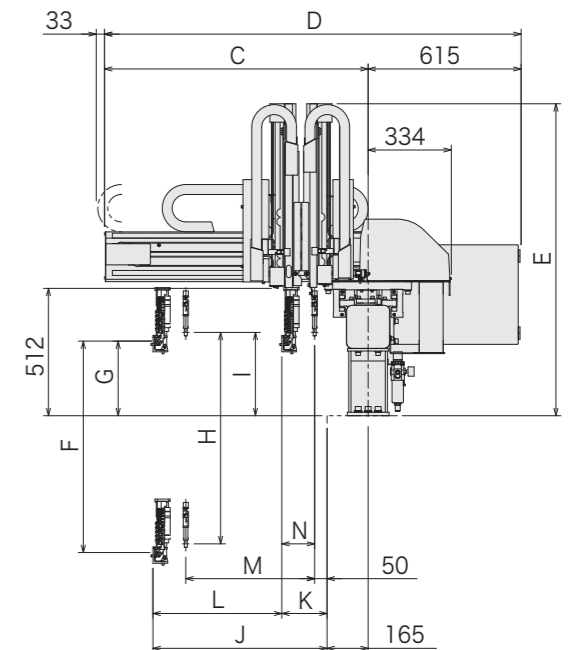
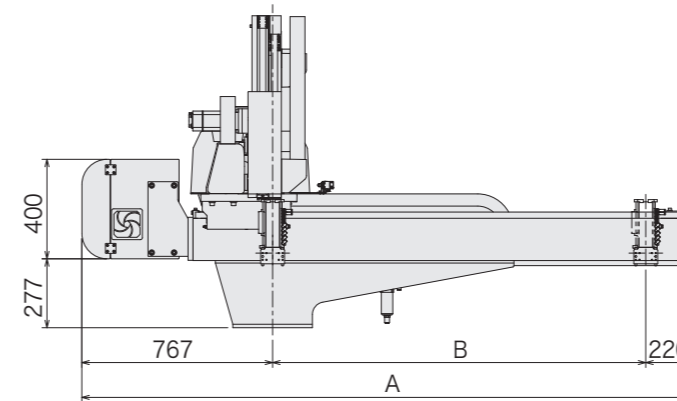
| Power supply                        |  | Drive method                         |                  | Controller model  |                      | Working air pressure |                             | Flip angle   |                                |
|-------------------------------------|--|--------------------------------------|------------------|-------------------|----------------------|----------------------|-----------------------------|--------------|--------------------------------|
| 200/220 VAC (50/60 Hz) Single phase |  | Digital servo motor 3/5-axis         |                  | E-touch compact 3 |                      | 0.49MPa              |                             | 90°          |                                |
| Model                               | Power consumption                      | Traverse stroke [mm]                 | Kick stroke [mm] |                   | Vertical stroke [mm] |                      | Air consumption [NL/cycle]  | Payload [kg] | Target IMM clamp capacity [tf] |
|                                     |  |                                      | Main arm         | Sub arm           | Main arm             | Sub arm              |                             |              |                                |
| YD2-1025S                           | S type<br>1.9 kVA<br>200 VAC<br>9.3 A  | (1100)                               | 578              | —                 | (700)                | —                    | 5.6<br>Smart ECO Vacuum OFF | 5            | 100-250                        |
| YD2-1025D                           |  |                                      | 518              | 518               | (950)                | (700)                |                             |              |                                |
| YD2-2535S                           | D type<br>2.5 kVA<br>200 VAC<br>12.3 A | (1700)<br>(1900)<br>(2200)<br>(2500) | 728              | —                 | 950                  | —                    | 5.9<br>Smart ECO Vacuum OFF | 8            | 250-350                        |
| YD2-2535D                           |  |                                      | 668              | 668               | (1100)               | 950                  |                             |              |                                |

S type : Robot is equipped with main arm only. D type : Robot is equipped with main arm and sub arm.  
( ) : Modified stroke ( ) : Increased maximum payload  
Payload includes the end-of-arm tool.

Rear (Non-operator) Side Discharge Direction (mm)



Operator Side Discharge Direction (mm)



[mm]

| Model     | A  | B  | C    | D    | E                        | F                     | G   | H                     | I   | J   | K   | L   | M   | N   |
|-----------|--|--|------|------|--------------------------|-----------------------|-----|-----------------------|-----|-----|-----|-----|-----|-----|
| YD2-1025S |  |  |      |      |                          |                       |     | —                     | —   |     | 122 | 578 | —   | —   |
| YD2-1025D | (2087)<br>2487<br>(2687)<br>(2887)<br>(3187)<br>(3487) | (1100)<br>1500<br>(1700)<br>(1900)<br>(2200)<br>(2500) | 1060 | 1675 | (1182)<br>1254<br>(1310) | (700)<br>850<br>(950) | 300 | (700)<br>850<br>(950) | 335 | 700 | 182 | 518 | 518 | 132 |
| YD2-2535S |  |  |      |      |                          |                       |     | —                     | —   |     | 122 | 728 | —   | —   |
| YD2-2535D |  |  | 1210 | 1825 | 1310<br>(1382)           | 950<br>(1100)         |     | 950<br>(1100)         | 335 | 850 | 182 | 668 | 668 | 132 |

( ) : Modified stroke

YD2-1025S/D, YD2-2535S/D

All-Axis Servo Driven Type Take-Out Robot