
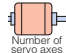
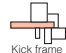

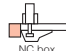



HSA-150S, HSA-250S

■ Features

-  **100–300 tf**
-  **3-axis**
-  **Dual support type**
-  **Reduced overall height type**
-  **On robot body**
-  **E-touch II-K***

* Smaller E-touch compact II controller also available.
 ** Measurements above are relative to previous comparable model.

High-Speed Robot with Optimized, Lightweight Design

The HSA incorporates Design Optimization for higher speed and rigidity with less weight. With take-out times as fast as 0.27 sec proven during live molding, the HSA is 13% lighter and 25% faster** than previous models.

Slimmer, Optimally-Designed Arm Fits Through Narrower Mold Openings

Yushin applied design optimization to the robot arm's wrist flip unit (the arm end which enters the mold) to make it 38%** slimmer. The thinner arm allows operators to shorten mold openings by up to 41 mm, which helps accelerate the molding cycle.

Vibration Control Technology Tames Arm Flutter

The HSA features vibration-reducing technology throughout its construction, including a main arm reinforced with CFRP (carbon fiber reinforced plastic) for superior vibration-damping.

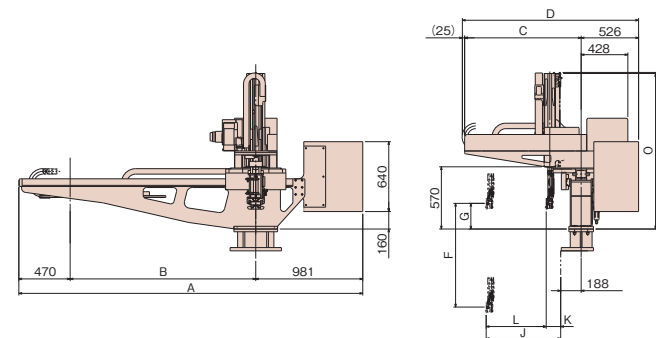
■ Standard Specifications

Power source	Driving method	Control method	Air pressure	Maximum allowable air pressure (factory)	Wrist flip angle
3 Phase AC200V 50/60Hz	Digital servo motor 3-axis	Micro computer control	0.49MPa	0.70MPa	90°

Model	Power consumption	Traverse stroke (mm)	Kick stroke (mm)	Vertical stroke (mm)	Air consumption (NL/cycle)	Payload (kg)	Clamping force (tf)
			Main arm	Main arm			
HSA-150S	3 Phase AC200V 17.4A Max.	1700 [1900] [2200] [2500]	550	850 <850> <950>	8.6 (ECO vacuum OFF) 2.9 (ECO vacuum ON)	3	100 ~ 220
HSA-250S			760	950 <1100> <1300>	9.8 (ECO vacuum OFF) 3.6 (ECO vacuum ON)		

S type: Robot is equipped with product take-out arm only.
 []: Modified traverse stroke < >: Modified vertical stroke
 Support stanchion comes standard with models 2200 mm or longer.
 Payload includes the end-of-arm tool.

■ Dimensions (mm)



Model	A	B	C	D	E	F	G	J	K	L	O
HSA-150S	315 [335]	1700 [1900]	1068	1619	1387 <1435>	850 <950>	235	683	133	550 <1425>	1377 <1425>
HSA-250S	365 [395]	2200 [2500]	1278	1829	1515 <1811>	1100 <1300>		893		760 <1801>	

[]: Modified traverse stroke < >: Modified vertical stroke



The CE specification is a special order. Please contact us.

PAT.