

## E-touch II

Target model  
**HSA series**  
**HST series**  
**RC/RC II series**  
**RB II series**  
**TSXA series**



PAT.

### ◆ Large, Highly Visible Monitor

- 10.4-inch, full-color touch screen

### ◆ Easy Operation

- Audio Guidance gives vocal cues to support complex operations.
- Directional keypad allows manual manipulation of each axis without looking at the touch panel when teaching inside the mold.
- Settings and menus are icon-based.

### ◆ Extra Tough Construction

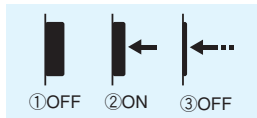
- Rubber shock panels on each side of the controller help cushion accidental drops.

### Handy type

New grip design and lightweight portability minimizes fatigue from prolonged hours of use.

### Operator Safety switch

3-position switch enhances safety.



Touch screen

USB port

CF memory card

Uses CF memory cards. SD memory cards may also be used by using an SD-to-PC card adapter. This ability is useful for when loading images from a digital camera.

CPU box

The mechanism has no moving parts such as fans and disks, improving its reliability.

### Easy Operation

#### ◆ Operator "Easy Screen"



Fewer buttons simplify screen operation.

#### ◆ Lead Through Teaching



Make program changes using the same procedures for teaching. Lead through teaching allows you to add points, timers, and speed settings for each motion.

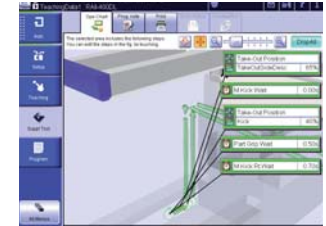
#### ◆ Take-Out Robot Simulator Screen



Check programmed motions in 3D images on the controller or another PC. This feature is standard on all E-touch II controllers.

### Teaching is a Breeze

#### ◆ Motion Chart Screen



Specify positions, speed, and timer settings on a single screen. Graphical interface allows intuitive setting adjustments.

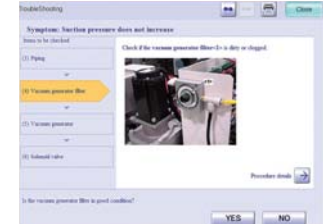
#### ◆ Flexible Teaching

Option

This software kit allows users to create motion programs on the controller or a PC.

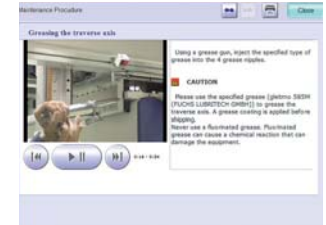
### Simplified Maintenance

#### ◆ Troubleshooting Mode Screen



Troubleshoot problems by following on-screen guidance.

#### ◆ Maintenance Procedure Display



On-screen maintenance procedures allow on-site maintenance without referring to a manual.